

# NEPTUNE

## NEPTUNE CATERING PACKAGES AND ITEMS

### NIGIRI, SASHIMI, MAKI

*all packages serve 4 people*

Neptune Tasting Box \$160.00  
*choice of 4 sauces and 4 toppings*

16pc Nigiri/Sashimi  
*choice of 4 proteins*  
4 Maki rolls  
*choice of any 4 maki rolls*

Maki Assortment Box \$130.00  
*choice of 4 sauces and 4 toppings*

8 Maki Rolls  
*Choice of any 4 rolls*

Nigiri Assortment Box \$150.00  
*Choice of 6 Sauces and 6 Toppings*

24pcs of nigiri  
*choice of 6 proteins*

Sashimi Tasting Box \$170.00  
*choice of 4 sauces and 4 toppings*

32pcs of sashimi  
*choice of 4 proteins*

### NIGIRI AND SASHIMI SELECTION

- Salmon
- Salmon Toro
- Hamachi
- Hamachi Toro
- Hirame (Flounder)
- Ikura
- Scallop
- King Oyster Mushroom
- Seared Tofu
- Tamago
- Grilled Eel ++\$
- Texas Wagyu Tenderloin ++\$
- Uni (In Season) ++\$
- Tuna Toro ++\$

### ROLLS

*all rolls contain cucumber*

- Spicy Tuna
- Salmon
- Spicy Salmon
- Hamachi
- Scallop
- Grilled Tofu
- Avocado
- Seasonal Mushroom
- Grilled Eel ++\$
- Seared Texas Wagyu ++\$
- Blue Crab ++\$

### SUSHI TOPPINGS

*Extra Toppings \$3/ea.*

- Chili Crunch
- Crispy Onion
- Crispy Garlic
- Smashed Avocado
- Panko(toasted & Seasoned)
- Furikake
- Toasted Sesame Seeds
- Takuan (Pickled Radish)
- Tobiko/Masago
- Puffed Quinoa

### SAUCES

*Extra Toppings \$4/ea.*

- Ponzu/Spicy Ponzu
- Wasabi Ranch
- Spicy Mayo
- Tonkatsu
- Sweet Chili
- Korean Chili BBQ/ Sesame
- Truffle Mayo
- Shiso Shallot Vinaigrette
- Sesame Shoyu
- Shiso wasabi chimichurri
- Japanese mustard BBQ
- Zaru(soba sauce)
- Yuzu Truffle Sauce
- Umeboshi Sauce
- Yuzu Kosho Tamari



SEA TO SHORE TO DOOR

## DONBURI serves 4

Create a custom Neptune Bowl

Choose from our hot or cold protein offerings,  
4 mix ins, 4 sauces, and 4 toppings

Choose One Hot OR One Cold Option

### Hot Specialties \$55.00

- Grilled Marinated Tofu
- Texas Mushroom Kinogodon
- Salmon Katsu
- Chicken Katsu
- Pork Katsu
- Grilled Texas Wagyu Flatiron ++\$
- Grilled Eel ++\$
- Grilled and Pulled Hamachi Kama ++\$

### Cold Specialties \$65.00

- Tuna/Spicy Tuna
- Salmon/Spicy Salmon
- Hamach Ikura ++\$
- Chirashi (assorted fish)

Your Choice of 4 Sauces, 4 Mix-ins,  
and 4 Toppings

\$4 for each additional item

## SAUCES

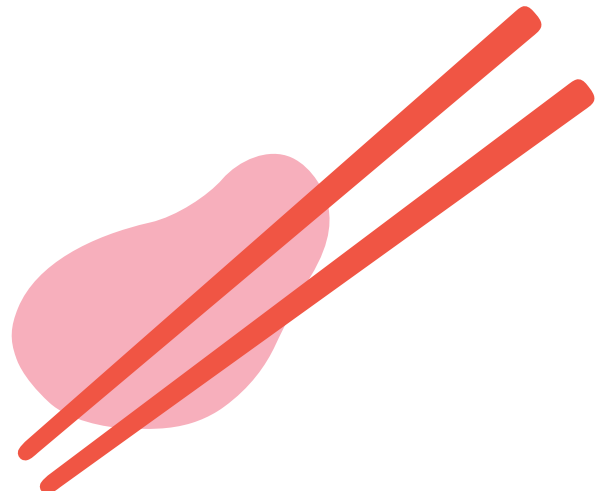
- Ponzu/Spicy Ponzu
- Wasabi Ranch\*
- Spicy Mayo
- Tonkatsu\*
- Sweet Chili
- Korean Chili BBQ/ Sesame
- Truffle Mayo
- Shiso Shallot Vinaigrette
- Sesame Shoyu
- Shiso wasabi chimichurri
- Japanese mustard BBQ
- Zaru(soba sauce)
- Yuzu Truffle Sauce
- Umeboshi Sauce

## MIX-INS

- Cucumber
- Red Onion
- Shredded Cabbage
- Sweet Corn
- Edamame
- Jalapeno Peppers
- Seaweed Salad
- Roasted Mushrooms
- Grilled Eggplant
- Broccoli
- Sweet Potato
- Braised Radish
- Fried Hearts of Palm
- Kimuchi, Hijiki Salad\*

## TOPPINGS

- Chili Crunch
- Crispy Onion
- Crispy Garlic
- Green Onion + Ginger
- Smashed Avocado
- Toasted Panko
- Furikake
- Togarashi (chili seasoning)
- Toasted Sesame Seeds
- Kizami Wasabi (pickled wasabi)
- Takuan (Pickled Radish)
- Bonito Flakes
- Puffed Quinoa
- Ikura++\$



# NEPTUNE "BENTO" BOX

Bento are individually packed for a personal Neptune experience. All boxes served with House-made tsukemono, and Chef selection seasonal fukusai.

Minimum Order 10 of each flavor Bento. Smaller quantities orders upon special request.

## "Donburi" Bento Box \$27.00/pp

Choose from Seasoned Sushi Rice, Soba Noodles, or Mixed Asian Greens

Choice of 1 Hot OR 1 Cold Option, 1 Mix-in, 1 Sauce, 1 Topping, and 1 Neptune Cucumber & menma maki roll

### Hot Specialties

- Grilled Marinated Tofu
- Texas Mushroom Kinogodon
- Salmon Katsu
- Chicken Katsu
- Pork Katsu
- Grilled Texas Wagyu Flatiron
- Grilled Eel
- Grilled and Pulled Hamachi Kama

### Cold Specialties

- Tuna/Spicy Tuna
- Salmon/Spicy Salmon
- Hamach Ikura
- Chirashi (assorted fish)
- Seasonal Japanese Vegetable Preparation

## Nigiri/Sashimi Bento 8pc sushi \$30.00/pp

Choice of 4 proteins, Choice of 1 Sauce and 1 Topping

- |           |               |
|-----------|---------------|
| • Tuna    | • King Oyster |
| • Salmon  | • Mushroom    |
| • Hamachi | • Seared Tofu |
| • Ikura   | • Tamago      |
| • Scallop |               |

## Premium Nigiri/Sashimi

### Bento 8pc sushi \$37.00/pp

Choice of 4 proteins, Choice of 1 Sauce and 1 Topping

- |                |                     |
|----------------|---------------------|
| • O-Toro       | • Grilled Eel       |
| • Hamachi Toro | • Texas Wagyu       |
| • Flounder     | • Tenderloin        |
| • Ebi          | • Santa Barbara Uni |

## SAUCES

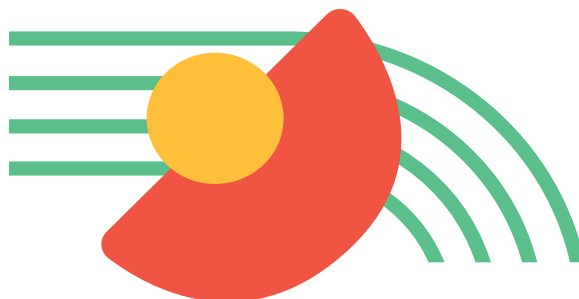
- |                     |                      |
|---------------------|----------------------|
| • Ponzu/Spicy Ponzu | • Sesame Shoyu       |
| • Wasabi Ranch*     | • Shiso wasabi       |
| • Spicy Mayo        | • chimichurri        |
| • Tonkatsu*         | • Japanese mustard   |
| • Sweet Chili       | • BBQ                |
| • Korean Chili BBQ/ | • Zaru(soba sauce)   |
| • Sesame            | • Yuzu Truffle Sauce |
| • Truffle Mayo      | • Umeboshi Sauce     |
| • Shiso Shallot     | • Tofu Green Goddess |
| • Vinaigrette       |                      |

## MIX-INS

- |                     |                        |
|---------------------|------------------------|
| • Cucumber          | • Grilled Eggplant     |
| • Red Onion         | • Broccoli             |
| • Shredded Cabbage  | • Sweet Potato         |
| • Sweet Corn        | • Braised Radish       |
| • Edamame           | • Fried Hearts of Palm |
| • Jalapeno Peppers  | • Kimuchi              |
| • Seaweed Salad     | • Hijiki Salad         |
| • Roasted Mushrooms |                        |

## TOPPINGS

- |                   |                   |
|-------------------|-------------------|
| • Chili Crunch    | • Toasted Sesame  |
| • Crispy Onion    | • Seeds           |
| • Crispy Garlic   | • Kizami          |
| • Green Onion +   | • Wasabi(pickled  |
| • Ginger          | • wasabi)         |
| • Smashed Avocado | • Takuan (Pickled |
| • Toasted Panko   | • Radish)         |
| • Furikake        | • Bonito Flakes   |
| • Togarashi(chili | • Puffed Quinoa   |
| • seasoning)      | • Ikura++\$       |



# NEPTUNE "BENTO" BOX

Minimum Order 10 of each flavor Bento. Smaller quantities orders upon special request.

## Sushi and Maki

Bento 6pc sushi/1 maki roll \$30.00/pp  
Choice of 3 Nigiri/Sashimi, Choice of 1 Maki Roll  
Choice of 1 Sauce and 1 Topping

## Nigiri/Sashimi

- Tuna
- Salmon
- Hamachi
- Ikura
- Scallop
- King Oyster Mushroom
- Seared Tofu
- Tamago

## Maki

- Hamachi
- Scallop
- Blue Crab
- Grilled Eel
- Seared Texas Wagyu

## Premium Sushi and Maki

Bento 6pc sushi/1 maki roll \$40.00/pp  
Choice of 3 Proteins, Choice of 1 Maki Roll  
Choice of 1 Sauce and 1 Topping

## Protein

- O-Toro
- Hamachi Toro
- Flounder
- Ebi
- Grilled Eel
- Texas Wagyu Tenderloin
- Santa Barbara Uni

## Maki

- Hamachi
- Scallop
- Blue Crab
- Grilled Eel
- Seared Texas Wagyu

## Maki Bento 2 maki rolls

Choice of 1 Sauce and 1 Topping \$27.00/pp

## Maki

- Tuna
- Spicy Tuna
- Salmon
- Spicy Salmon
- Hamachi
- Grilled Tofu
- Avocado
- Seasonal Mushroom

## Premium Maki Bento 2 maki rolls

Choice of 1 Sauce and 1 Topping \$34.00/pp

## Maki

- Hamachi
- Scallop
- Blue Crab
- Grilled Eel
- Seared Texas Wagyu

# SAUCES

- Ponzu/Spicy Ponzu
- Wasabi Ranch\*
- Spicy Mayo
- Tonkatsu\*
- Sweet Chili
- Korean Chili BBQ/ Sesame
- Truffle Mayo
- Shiso Shallot Vinaigrette
- Sesame Shoyu
- Shiso wasabi chimichurri
- Japanese mustard BBQ
- Zaru(soba sauce)
- Yuzu Truffle Sauce
- Umeboshi Sauce
- Tofu Green Goddess

# MIX-INS

- Cucumber
- Red Onion
- Shredded Cabbage
- Sweet Corn
- Edamame
- Jalapeno Peppers
- Seaweed Salad
- Roasted Mushrooms
- Grilled Eggplant
- Broccoli
- Sweet Potato
- Braised Radish
- Fried Hearts of Palm
- Kimuchi
- Hijiki Salad

# TOPPINGS

- Chili Crunch
- Crispy Onion
- Crispy Garlic
- Green Onion + Ginger
- Smashed Avocado
- Toasted Panko
- Furikake
- Togarashi(chili seasoning)
- Toasted Sesame Seeds
- Kizami
- Wasabi(pickled wasabi)
- Takuan (Pickled Radish)
- Bonito Flakes
- Puffed Quinoa
- Ikura++\$



**GOOD GOD**



**IT'S GOOD!**

## SNACKS & SIDES

Each order serves 4 people

Great for Sharing or in Addition to your Bentos

Miso Soup <i>Tofu, Wakame, Negi</i>	\$16.00
Edamame <i>Salted Sesame or Spicy</i>	\$15.00
Seaweed Salad <i>Yuzu, Sesame</i>	\$12.00
Spicy Cucumber Sunomono <i>Ginger, Sesame</i>	\$14.00
Gyoza (vegetable) <i>12 gyozas, ponzu sauce</i>	\$28.00
Chicken Karaage <i>Wasabi ranch</i>	\$20.00
Yuba Vegetable Spring Roll <i>Tofu Green Goddess</i>	\$18.00
Seasonal Onigiri (Filled Rice Balls) <i>4 Rice balls, Choice of Seasonal Fillings, Wrapped in Toasted Nori</i>	\$18.00

## SWEETS

Finish your meal right with a sweet treat  
to share (or not)

Matcha Cheesecake <i>mini cheesecakes, Raspberry Yuzu Sauce</i>	4.00/pp
"Tokyo Banana" Rice Pudding <i>banana Genois, caramelized banana</i>	4.00/pp
Red Bean Mochi <i>Assorted Flavor Mochis filled with Sweet Red Bean</i> <i>*Not Produced on Premise, may contain Refined Sugars</i>	\$3.00/pp
Cherry Blossom Pudding <i>uzu and Coconut whip</i>	\$4.00/pp



@NEPTUNESUSHI

@NEPTUNESUSHICO

NEPTUNESUSHI.COM